

Admission
 Directions, Maps
 & Virtual Tour
 Concessions, Gifts
 & Rentals
 Group Visits
 Meetings, Parties
 Plan Your Event
 SUPPORT THE ZOO
 Sponsors
 Member Discounts
 TRAVEL & LOCAL Resources
 Nearby Attractions, Hotels,
 Restaurants
 Our Mission

Contact Us
 Get Involved
 News Room
 FAQ

slide show
 scenes of the season



Cleveland Metroparks Zoo
 3900 Wildlife Way
 Cleveland, OH 44109
 216-661-6500

Zoo & RainForest Hours

Cleveland Metroparks Zoo & The RainForest are open all year except January 1 and December 25.

Hours:

- Daily from 10 a.m. to 5 p.m.
- The main gate opens at 9:30 a.m.
- The Zoo Box Office closes at 4 p.m.
- Memorial Day through Labor Day, on Saturdays, Sundays and holidays, the Zoo and The RainForest remain open until 7 p.m. and Zoo Box Office closes at 6 p.m.

For weekly exhibit updates, please see our online Virtual Tour.

Zoo & RainForest Admission

Tickets & Fees:

	Nov 1, 2009 - Mar 31, 2010	Apr 1, 2010 - Oct 31, 2010
Adults (12 & older)	\$7.00	\$10.00
Children (2-11)	\$5.00	\$7.00
Children under 2	FREE	FREE

On Mondays, the Zoo (not including The RainForest) is FREE for residents of Cuyahoga County and Hinckley Township.* From Memorial Day through Labor Day, if Monday is a holiday, discounts apply on Tuesday instead. If you qualify for free Zoo-only admission on Mondays, tickets for The RainForest may be purchased at the following rates: Adults (12 and older) are \$5.00, Children (2-11) are \$3.00, and Children under 2 are free.

*To confirm your residency, bring photo ID or utility bill with current Cuyahoga County address with another form of ID.

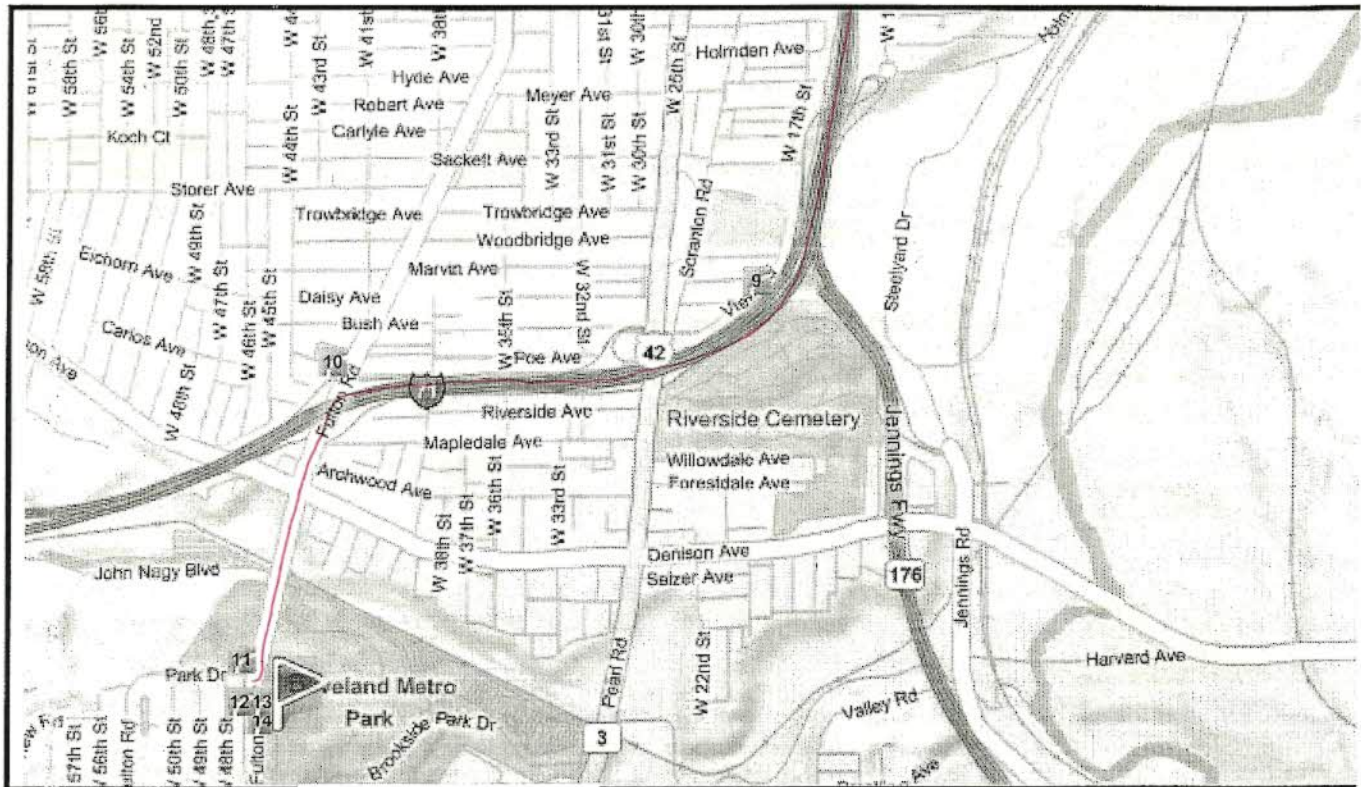
The following discounted admission is also available:

- Cleveland Zoological Society members receive free admission to the Zoo (membership benefits)
- Members of reciprocal zoos receive free or discounted admission to the Zoo and The RainForest for everyone listed on the membership card

Important Admission Information:

- **Parking is FREE**
- **Credit Cards:** Visa, Mastercard and Discover are accepted at the Box Office, as well as cash or check. The Zoo's main gift shops (Machaba Curios in the Welcome Plaza and The Market in The RainForest) accept Visa, Master Card, American Express or cash (no checks). Food vendors only accept cash.
- There are three **ATM's** available:
 - at the Ticket Plaza
 - in The RainForest
 - at the Roaring Lion Café
- A playground is located near the Primate Cat & Aquatics Building.
- Coolers and picnic baskets are allowed on Zoo grounds. Skateboards, roller skates, bicycles, pets and grills are prohibited. Smoking is permitted in designated areas or
- For the safety of the animals, the Zoo does not provide straws or drink lids. Help us maintain a healthy, positive environment - please do not feed or tease the animals. Keep our waterways clean and safe for the animals. Don't throw objects including coins in the water.
- ZooTrams and wheelchair accessible trams run daily FREE of charge. Enclosed, heat ZooTrams run during the winter when it's really chilly.

Print this page in a more readable format: Click Print next to the upper-right corner of the map.



Driving directions
To: Cleveland



Lakeland Community College, OH

A-B: 27.0 miles, 33 min Add to route

- | | |
|---|------------|
| 1. Depart from Lakeland Community College, OH | 0.0 miles |
| 2. Turn left onto N Clocktower Dr | 0.3 miles |
| 3. Turn right onto Clocktower Dr | 0.2 miles |
| 4. Turn right onto SR-306 / State Route 306 | 0.4 miles |
| 5. Take ramp left for I-90 West toward Cleveland | 4.9 miles |
| 6. At exit 188 , take ramp right for I-90 West toward Cleveland | 14.6 miles |
| 7. Keep left to stay on I-90 West | 3.3 miles |
| 8. Keep straight onto I-71 South | 1.5 miles |
| 9. At exit 245 , take ramp right and follow signs for Fulton Rd | 1.0 miles |
| 10. Turn left onto Fulton Rd | 0.7 miles |
| 11. Road name changes to Fulton Pkwy | 0.1 miles |
| 12. Turn left onto Brookside Park Dr / Wildlife Way | 0.2 miles |
| 13. Arrive at 3900 Wildlife Way, Cleveland, OH | 0.0 miles |

*The last intersection is Fulton Pkwy
If you reach US-42 / SR-3 / Pearl Rd, you've gone too far*

Cleveland Metroparks Zoo
3900 Wildlife Way, Cleveland, OH